



UNOLS Fleet Renewal Activities & Fleet Operations

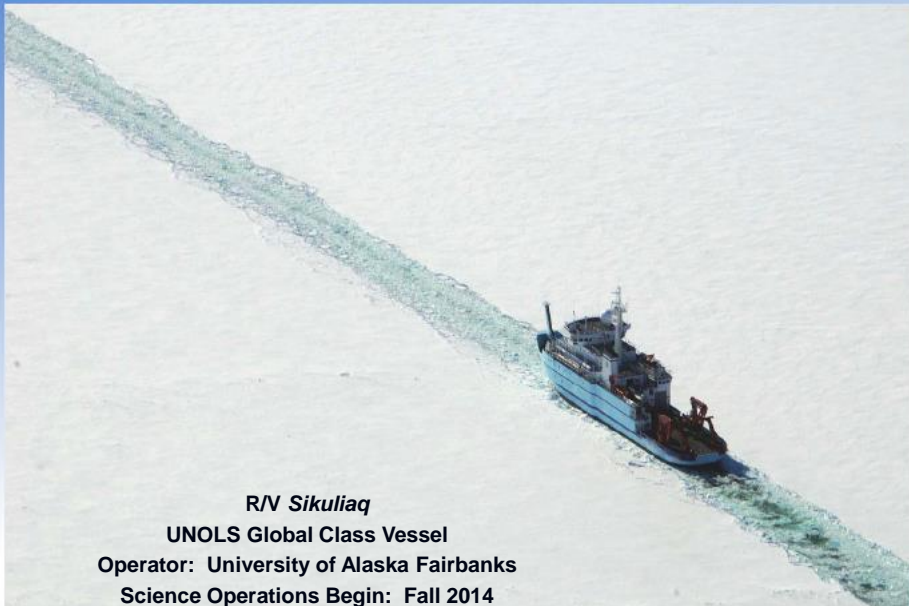
Report to:
Southern Association of Marine Laboratories
Joe Malbrough, Vessel Ops Superintendent, LUMCON
May 23, 2014



UNOLS Fleet Renewal Activities



R/V SIKULIAQ



R/V Sikuliaq
UNOLS Global Class Vessel
Operator: University of Alaska Fairbanks
Science Operations Begin: Fall 2014





Key Characteristics:

- Hull Material Steel; Aluminum pilothouse
- Length 238 ft
- Beam (Max) 50 ft
- Draft 15 ft
- Displacement 3043 LT (Full Load)
- Sustained Speed 12 kts
- Range 10,545 nm
- Endurance 40 days
- Propulsion 4 x 1044 kW Diesels, 2 x 879 kW Electric Propulsion Motors, 2 x Controllable Pitch Propellers, Bow & Stern Thrusters
- Accommodations 20 crew, 24 science berths
- ABS Classed/ABS Designed to ABS #A1 Circle E, #AMS and #ACCU, NIBS, Ice Class D0, USCG COI

Mission: Integrated, interdisciplinary, general purpose oceanographic research in coastal and deep ocean areas. Oceanographic sampling and data collection of surface, mid-water, sea floor, and sub-bottom parameters.

Quantity: Two (2)

User: Woods Hole Oceanographic Institution (AGOR 27), Scripps Institution of Oceanography (AGOR 28)

Ship Names: R/V *Neil Armstrong* (AGOR 27)
R/V *Sally Ride* (AGOR 28)

Builder: Dakota Creek Industries, Inc.

Contract: FFP

Contract Value: \$177.4M

ROM Unit Cost: \$74.1 M (lead), \$71.0M (follow)

Key Events:

Date:

- Phase I Contract Award Jan 10
- Milestone B/C Sep 11
- Phase II Contract Award Oct 11
- Follow Ship Award Feb 12
- Start Construction (Lead Ship) Jun 12
- Start Construction (Follow Ship) Jul 12
- Launch 1st Ship Feb 22, 2014
- Launch 2nd Ship ~ Aug 2014
- Delivery (Lead Ship) Jan 15 **
- Delivery (Follow Ship) Apr 15
- ** Delivery delayed by 3 months



**R/V NEIL ARMSTRONG
Launch – Feb 2014**





ONR
Office of Naval Research

AGOR 28 (R/V *Sally Ride*) Production



SALLY RIDE Now – Moved to the Rails - ready for launch in a few months

6

Regional Class Research Vessel (RCRV)





Key Features

- Variable Frequency Direct Drive
 - Flow Through
- DP-1
- Ice Class C0
- Schottel STP Twin Prop Z-Drive
- Big Back deck and Van Vestibule
- Telepresence
 - EM302/2040
 - ADCP/EK60
- SSV for full App-B compliant OHS
 - Synthetics
- Retractable Centerboard



Regional Class Research Vessel (RCRV)

- Successful Conceptual Design Review (CDR) with OSU – **December 2013**
- Advancement to Preliminary Design Phase Approved – **February 2014**
- PDR Scheduled - **August 3-5, 2014**
- Three vessels currently planned
- Actual number of vessels constructed based on projected science utilization and availability of funding (**See OCE Letter to UNOLS FIC**):
 - Request for UNOLS Community concurrence
 - Independent verification on OCE assumptions



Regional Class Research Vessel (RCRV)

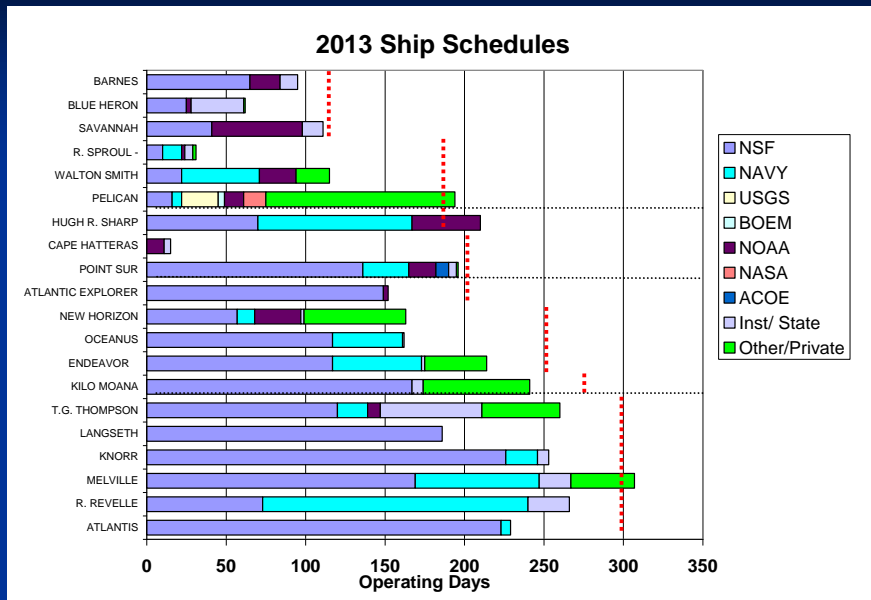
- Operator selection to take place once number of vessels is known:
 - Solicitation in early CY 2017
- MREFC Funding Request for FY17 in **March 2015**
- First RCRV operational in **~CY 2020**



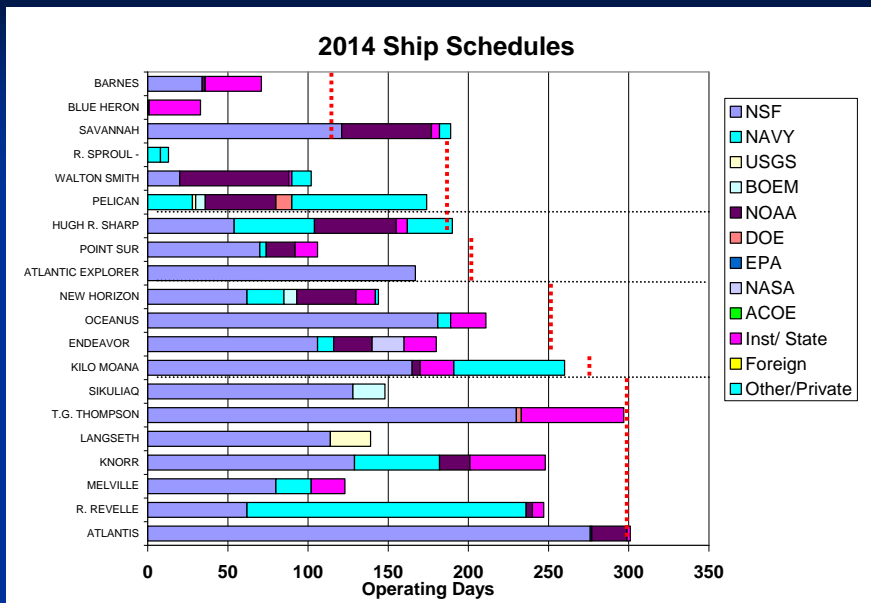
UNOLS Fleet Operations



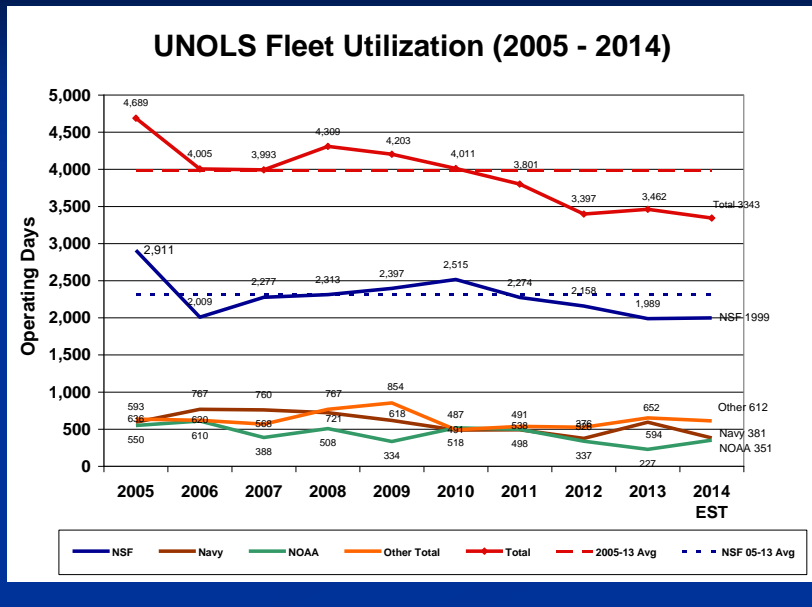
Fleet Utilization by Ship: 2013



Fleet Utilization by Ship: 2014



UNOLS Fleet Utilization Trends



UNOLS Operations in the Gulf of Mexico

2013 GOM Operating Days

- Endeavor = 37
- Walton Smith = 51
- Hugh R. Sharp = 49
- Pelican = 194
- **TOTAL = 331 Operating Days**

2014 GOM Operating Days

- Atlantis = 82
- Walton Smith = 31
- Hugh R. Sharp = 31
- Pelican = 169
- **TOTAL = 313 Operating Days**

THANK YOU

jmalbrough@lumcon.edu

<http://unols.org>
<http://lumconvessels.com>